

**Meridian BioAnalytical Services**ISO/IEC 17025:2017 Accredited — A2LA Certificate No. 8821.01  
www.MeridianBioAnalytical.com | support@meridianbioanalytical.com**Certificate of Analysis**www.MeridianBioAnalytical.com  
support@meridianbioanalytical.com

<b>Client:</b>	ResearchPure LLC	<b>Accession #:</b>	MBA260617421
	DBA ResearchPure	<b>Search Code:</b>	MBA-MBA260617421
	Analytical Reference Standards	<b>Received:</b>	06/14/2026
		<b>Reported:</b>	06/17/2026
<b>Lot #:</b>	RP-20260614-919	<b>Batch #:</b>	062026-GLP1-09

**Sample Summary**

<b>Product:</b>	GLP-1/GIP/GCG Tri-Receptor Agonist Pep	<b>Purity:</b>	99.235%
<b>Identity:</b>	Confirmed	<b>Net Content:</b>	0.99 mg
<b>Appearance:</b>	White Lyophilized Powder	<b>CAS Number:</b>	2381089-83-2
<b>Mol. Formula:</b>	C221H342N46O68	<b>Mol. Weight:</b>	4731.33 Da

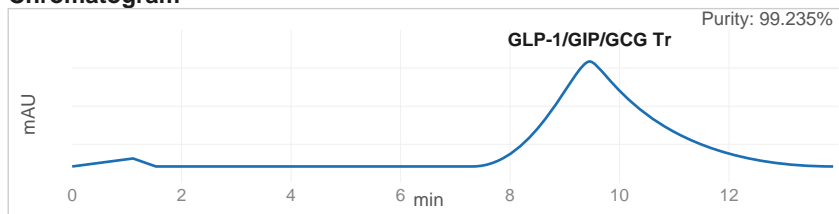
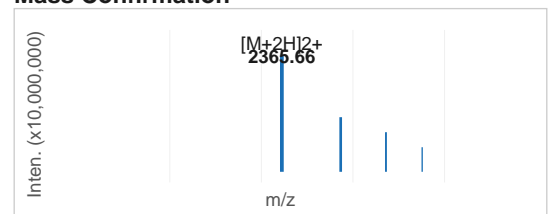
All Chemical Analysis performed by HPLC-UV with Mass Spectrometry (LC-MS/MS)

**Analytical Results**

Test	Specification	Result
Identity (LC-MS/MS)	Confirmed by mass spectrometry	<b>Confirmed</b>
Purity (RP-HPLC, 214 nm)	>= 99.0% area normalization	<b>99.235% — Pass</b>
Net Content / Assay	>= 1 mg per label	<b>0.99 mg</b>

**Method: Endotoxin — Limulus Amebocyte Lysate (LAL) assay per USP <85> under validated laboratory conditions.**

<b>Endotoxin Replicate 1:</b>	<b>Pass</b>	Assay Sensitivity: <= 0.05 EU/mL
<b>Endotoxin Replicate 2:</b>	<b>Pass</b>	Assay Sensitivity: <= 0.05 EU/mL

**Chromatogram****Mass Confirmation****Michael Torres, M.S.**Michael Torres, M.S.  
Principal Chemist  
Meridian BioAnalytical Services**COA: MBA260617421**Meridian BioAnalytical Services  
2841 Innovation Drive, Suite 400  
Research Triangle Park, NC 27709

www.MeridianBioAnalytical.com | support@meridianbioanalytical.com

The peptide purity analysis reported here was conducted under standard laboratory conditions. This analysis is intended for informational purposes only and is specific to the sample(s) provided. These materials are intended for in vitro laboratory research use only and are not approved for human or veterinary use, diagnostic, therapeutic, or clinical applications. Results should be interpreted by qualified professionals within the scope of the intended research. Searchable via: www.MeridianBioAnalytical.com Contact: support@meridianbioanalytical.com