

Meridian BioAnalytical ServicesISO/IEC 17025:2017 Accredited — A2LA Certificate No. 8821.01
www.MeridianBioAnalytical.com | support@meridianbioanalytical.com**Certificate of Analysis**www.MeridianBioAnalytical.com
support@meridianbioanalytical.com

Client:	ResearchPure LLC	Accession #:	MBA260654289
	DBA ResearchPure	Search Code:	MBA-MBA260654289
	Analytical Reference Standards	Received:	06/12/2026
		Reported:	06/15/2026
Lot #:	RP-20260612-914	Batch #:	062026-GLP1-06

Sample Summary

Product:	GLP-1/GIP Dual-Receptor Co-Agonist Pol	Purity:	99.263%
Identity:	Confirmed	Net Content:	1.0 mg
Appearance:	White Lyophilized Powder	CAS Number:	2023788-19-2
Mol. Formula:	C225H348N48O68	Mol. Weight:	4813.53 Da

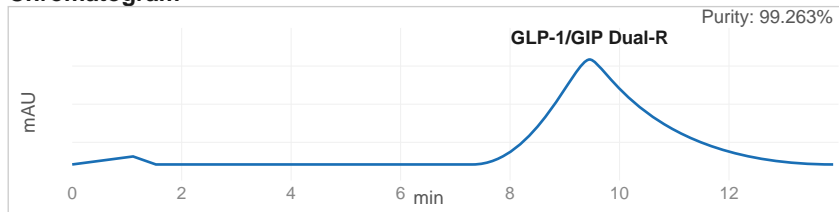
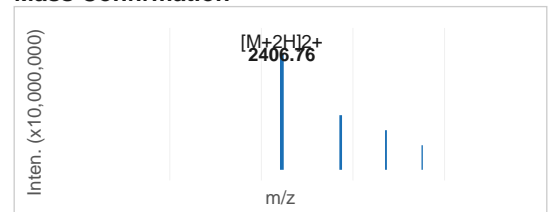
All Chemical Analysis performed by HPLC-UV with Mass Spectrometry (LC-MS/MS)

Analytical Results

Test	Specification	Result
Identity (LC-MS/MS)	Confirmed by mass spectrometry	Confirmed
Purity (RP-HPLC, 214 nm)	>= 99.0% area normalization	99.263% — Pass
Net Content / Assay	>= 1 mg per label	1.0 mg

Method: Endotoxin — Limulus Amebocyte Lysate (LAL) assay per USP <85> under validated laboratory conditions.

Endotoxin Replicate 1:	Pass	Assay Sensitivity: <= 0.05 EU/mL
Endotoxin Replicate 2:	Pass	Assay Sensitivity: <= 0.05 EU/mL

Chromatogram**Mass Confirmation****Michael Torres, M.S.**Michael Torres, M.S.
Principal Chemist
Meridian BioAnalytical Services**COA: MBA260654289**Meridian BioAnalytical Services
2841 Innovation Drive, Suite 400
Research Triangle Park, NC 27709

www.MeridianBioAnalytical.com | support@meridianbioanalytical.com

The peptide purity analysis reported here was conducted under standard laboratory conditions. This analysis is intended for informational purposes only and is specific to the sample(s) provided. These materials are intended for in vitro laboratory research use only and are not approved for human or veterinary use, diagnostic, therapeutic, or clinical applications. Results should be interpreted by qualified professionals within the scope of the intended research. Searchable via: www.MeridianBioAnalytical.com Contact: support@meridianbioanalytical.com