

Meridian BioAnalytical ServicesISO/IEC 17025:2017 Accredited — A2LA Certificate No. 8821.01
www.MeridianBioAnalytical.com | support@meridianbioanalytical.com**Certificate of Analysis**www.MeridianBioAnalytical.com
support@meridianbioanalytical.com

| | | | |
|----------------|--------------------------------|---------------------|------------------|
| Client: | ResearchPure LLC | Accession #: | MBA260658833 |
| | DBA ResearchPure | Search Code: | MBA-MBA260658833 |
| | Analytical Reference Standards | Received: | 06/14/2026 |
| | | Reported: | 06/17/2026 |
| Lot #: | RP-20260614-938 | Batch #: | 062026-ALPHA-09 |

Sample Summary

| | | | |
|----------------------|---------------------------------------|---------------------|------------|
| Product: | Alpha-MSH C-Terminal Tripeptide (KPV) | Purity: | 99.321% |
| Identity: | Confirmed | Net Content: | 4.97 mg |
| Appearance: | White Lyophilized Powder | CAS Number: | 67727-97-3 |
| Mol. Formula: | C16H30N4O4 | Mol. Weight: | 342.43 Da |

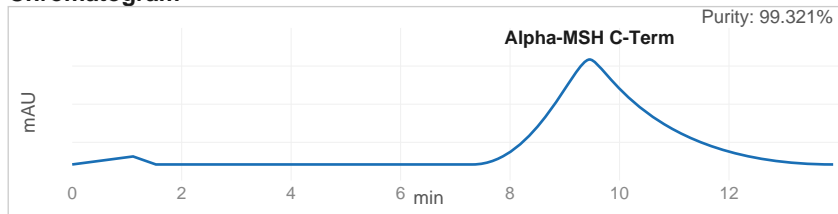
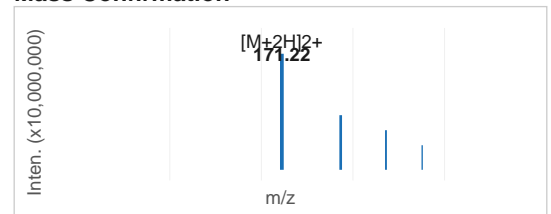
All Chemical Analysis performed by HPLC-UV with Mass Spectrometry (LC-MS/MS)

Analytical Results

| Test | Specification | Result |
|--------------------------|--------------------------------|-----------------------|
| Identity (LC-MS/MS) | Confirmed by mass spectrometry | Confirmed |
| Purity (RP-HPLC, 214 nm) | >= 99.0% area normalization | 99.321% — Pass |
| Net Content / Assay | >= 5 mg per label | 4.97 mg |

Method: Endotoxin — Limulus Amebocyte Lysate (LAL) assay per USP <85> under validated laboratory conditions.

| | | |
|-------------------------------|-------------|----------------------------------|
| Endotoxin Replicate 1: | Pass | Assay Sensitivity: <= 0.05 EU/mL |
| Endotoxin Replicate 2: | Pass | Assay Sensitivity: <= 0.05 EU/mL |

Chromatogram**Mass Confirmation**Michael Torres, M.S.Michael Torres, M.S.
Principal Chemist
Meridian BioAnalytical Services**COA: MBA260658833**Meridian BioAnalytical Services
2841 Innovation Drive, Suite 400
Research Triangle Park, NC 27709

www.MeridianBioAnalytical.com | support@meridianbioanalytical.com

The peptide purity analysis reported here was conducted under standard laboratory conditions. This analysis is intended for informational purposes only and is specific to the sample(s) provided. These materials are intended for in vitro laboratory research use only and are not approved for human or veterinary use, diagnostic, therapeutic, or clinical applications. Results should be interpreted by qualified professionals within the scope of the intended research. Searchable via: www.MeridianBioAnalytical.com Contact: support@meridianbioanalytical.com